

RIVERVIEW PARK FISHING PIER REPAIRS

PROJECT NO. 3022

CITY OF PITTSBURG



THE CITY COUNCIL OF
THE CITY OF PITTSBURG

JELANI KILLINGS, MAYOR
DIONNE ADAMS, VICE MAYOR
ANGELICA LOPEZ, COUNCIL MEMBER
JUAN ANTONIO BANALES, COUNCIL MEMBER
ARLENE KOBATA, COUNCIL MEMBER

GARRETT EVANS, CITY MANAGER
ALICE E. EVENSON, CITY CLERK
JOHN SAMUELSON, PUBLIC WORKS DIRECTOR/CITY
ENGINEER

[Signature]
JOHN SAMUELSON, P.E., CITY ENGINEER, CE 67734
DATE: 5/30/2025

ACCEPTANCE OF THESE IMPROVEMENT PLANS BY THE CITY ENGINEER SHALL NOT RELIEVE THE ENGINEER OF THE RECORD FOR THE DESIGN NOR FROM ANY DEFICIENCIES RESULTING FROM THE DESIGN THEREOF.

CITY ENGINEER SHALL SIGN ANY REVISION PRIOR OR DURING CONSTRUCTION A COPY OF THE REVISION SHALL BE SUBMITTED TO THE CITY THROUGH ELECTRONIC OR HARD COPY FORMAT.

A "RECORD DRAWING" SHALL BE SUBMITTED TO THE CITY THROUGH ELECTRONIC OR HARD COPY PRIOR TO ACCEPTANCE OF THE WORK AS COMPLETE.

THE REPAIRS SHOWN HEREIN ARE BASED ON RESTORING THE EXISTING STRUCTURE TO ITS CONSTRUCTION AND AESTHETICS PRIOR TO THE FIRE INCIDENT DATE. THE REPAIRS ARE NOT INTENDED TO MEET CURRENT CODE OR IMPROVE ON THE ORIGINAL DESIGN. IT ASSUMES THAT THE STRUCTURAL DESIGN AND CONSTRUCTION OF THE ORIGINAL PIER WAS IN ACCORDANCE WITH THE BUILDING CODE IN EFFECT AT THE TIME OF ITS INSTALLATION AND THE LONGEVITY OF THE STRUCTURE DEMONSTRATES IT WAS ADEQUATELY DESIGNED, CONSTRUCTED, AND MAINTAINED.

| DRAWING INDEX | | |
|---------------|---------|---------------------------|
| SHEET | DRAWING | TITLE |
| 1 | T01 | COVER SHEET |
| 2 | G01 | GENERAL NOTES |
| 3 | C01 | SITE PLAN AND ACCESS |
| 4 | C02 | DECKING AND FRAMING PLANS |
| 5 | C03 | SECTIONS AND DETAILS |
| 6 | C04 | DETAILS |



PLAN INTENDED TO BE VIEWED
IN COLOR. ADJACENT BLOCK IS
"BLUE"
ONE INCH
AT FULL SIZE. IF NOT ONE
INCH SCALE ACCORDINGLY

ISSUED FOR BID

K:\Projects\3022-City of Pittsburg\Fishing Pier Repair\Construction Plans\3022-PL-001_COVER-SHEET_T01.dwg 1 T01
May 29, 2025 10:54am rasonable



| REVISIONS | | | | | |
|-----------|------|----|-------|-------------|--|
| REV | DATE | BY | APP'D | DESCRIPTION | |
| | | | | | |
| | | | | | |
| | | | | | |
| | | | | | |

DESIGNED BY: D. SHISHINO
DRAWN BY: R. RAZONABLE
CHECKED BY: C. MANSOUR
APPROVED BY: F. MASSABKI
SCALE: AS NOTED
DATE: MAY 29, 2025

**RIVERVIEW PARK
FISHING PIER REPAIRS**

COVER SHEET

T01

SHEET # **1** OF **6**

K:\Projects\0906-City of Pittsburg\Fishing Pier Repair\Construction Plans\0906 PL-General Notes_G01.dwg 3_G01
May 29, 2025 10:54am razonable

GENERAL NOTES:

- THIS PROJECT INCLUDE PUBLIC ACCESS FEATURES IN SELECTED AREAS OF THE SACRAMENTO RIVER.
- NON-COMFORMING MATERIALS OR CONDITIONS SHALL BE REPORTED TO THE ENGINEER PRIOR TO CORRECTIVE ACTION. ANY SUCH ACTION SHALL REQUIRE APPROVAL.
- DETAILS SHOWN ARE TYPICAL; SIMILAR DETAILS APPLY TO SIMILAR CONDITIONS UNLESS OTHERWISE NOTED.
- THE CONTRACTOR SHALL COMPLY WITH ALL REQUIRED PERMITS AND OTHER APPLICABLE REGULATORY REQUIREMENTS.
- THESE DRAWINGS DO NOT INCLUDE NECESSARY COMPONENTS FOR CONSTRUCTION SAFETY.
- THE CONTRACTOR IS RESPONSIBLE FOR THE SAFETY OF SITE PERSONNEL AND SHALL ABIDE BY THE REQUIREMENTS OF THE TECHNICAL SPECIFICATIONS AND THE CONTRACTOR'S HEALTH AND SAFETY PLAN (HASP), AS APPROPRIATE, AS WELL AS APPLICABLE OCCUPATIONAL SAFETY AND HEALTH ADMINISTRATION (OSHA) REGULATIONS.
- THE CONTRACTOR SHALL FURNISH, INSTALL, AND MAINTAIN APPROPRIATE SIGNAGE FOR TRAFFIC CONTROL AND PEDESTRIAN SAFETY DURING CONSTRUCTION.
- MAINTAIN OPEN ACCESS FOR ALL PUBLIC ROADWAYS DURING PERFORMANCE OF THE WORK.
- CONTRACTOR SHALL FIELD VERIFY LOCATIONS OF SITE STRUCTURES, LOCATION OF IDENTIFIED TREES, SHORELINE, AND OTHER SITE FEATURES.
- LOCATIONS DISPLAYED FOR EXISTING CONDITIONS SUCH AS SHORELINES STRUCTURES AND UTILITIES ARE APPROXIMATE. PRIOR TO BID CONTRACTOR SHALL FIELD VERIFY SITE EXISTING CONDITIONS THAT WILL BE ENCOUNTERED.
- THE CONTRACTOR SHALL BE RESPONSIBLE FOR SOIL EROSION AND SEDIMENT CONTROL MEASURES DURING THE CONSTRUCTION PERIOD, AS REQUIRED BY THE PERMITS, LOCAL ORDINANCES, PLANS, AND SPECIFICATIONS.
- THE CONTRACTOR SHALL MAINTAIN A NEAT AND ORDERLY SITE, YARD, AND GROUNDS. REMOVE AND DISPOSE OFF-SITE ALL RUBBISH, WASTE MATERIALS, LITTER, AND ALL FOREIGN SUBSTANCES. PROMPTLY NOTIFY APPROPRIATE AUTHORITIES AND OWNER'S REPRESENTATIVE, AND REMOVE PETRO-CHEMICAL SPILLS, STAINS AND OTHER FOREIGN DEPOSITS IN ACCORDANCE WITH LOCAL, STATE, AND FEDERAL REGULATIONS.
- IF AN UNDERWATER SHORELINE STRUCTURE (E.G., RIPRAP, CONCRETE BOAT RAMPS, ETC.) IS ENCOUNTERED IN ANY AREA WHERE NONE IS INDICATED, CONTRACTOR SHALL NOTIFY THE ENGINEER (STAMPEE).
- THE ENGINEER SHALL BE NOTIFIED IN WRITING OF ANY CONDITIONS THAT VARY FROM THOSE SHOWN ON THE DRAWINGS. THE CONTRACTOR'S WORK SHALL NOT VARY FROM THE DRAWINGS WITHOUT THE EXPRESSED APPROVAL OF ENGINEER.
- THE CONTRACTOR SHALL RESTORE ALL PUBLIC OR PRIVATE PROPERTY INCLUDING MARINE STRUCTURES DAMAGED OR REMOVED TO AT LEAST AS GOOD OF CONDITION AS BEFORE DISTURBED AS DETERMINED BY ENGINEER.
- THE CONTRACTOR IS ADVISED THAT ALL LOCAL PUBLIC NUISANCE LAWS AND NOISE ORDINANCES SHALL BE OBSERVED DURING THE COURSE OF CONSTRUCTION.

EXISTING PLAN NOTES:

- INFORMATION DEPICTED ON THESE DRAWINGS REPRESENT RESULTS OF FIELD MEASUREMENTS CONDUCTED ON APRIL 20, 2023 AND CAN ONLY BE CONSIDERED AS INDICATING THE GENERAL CONDITIONS EXISTING AT THAT TIME.

NOTE:
THE REPAIRS SHOWN HEREIN ARE BASED ON RESTORING THE EXISTING STRUCTURE TO ITS CONSTRUCTION AND AESTHETICS PRIOR TO THE FIRE INCIDENT DATE. THE REPAIRS ARE NOT INTENDED TO MEET CURRENT CODE OR IMPROVE ON THE ORIGINAL DESIGN. IT ASSUMES THAT THE STRUCTURAL DESIGN AND CONSTRUCTION OF THE ORIGINAL PIER WAS IN ACCORDANCE WITH THE BUILDING CODE IN EFFECT AT THE TIME OF ITS INSTALLATION AND THE LONGEVITY OF THE STRUCTURE DEMONSTRATES IT WAS ADEQUATELY DESIGNED, CONSTRUCTED, AND MAINTAINED.

PROJECT INFORMATION

PROJECT LOCATION:
RIVERVIEW PARK FISHING PIER
CITY OF PITTSBURG, COSTA COUNTY, CALIFORNIA

LANDOWNERS:
CITY OF PITTSBURG

PROJECT OWNER:
CITY OF PITTSBURG

ENGINEERS OF RECORD:
ANCHOR QEA, INC.
33 NEW MONTGOMERY ST, SUITE 1210,
SAN FRANCISCO, CA 94105
CONTACT: DANIEL SHISHINO, E.I.T.

ABBREVIATIONS:

BOT. BOTTOM
DWG. DRAWING
(E) EXISTING
ELEV. ELEVATION
FRP FIBERGLASS REINFORCED PLASTIC
FT FEET
H HORIZONTAL
ML 1/1000 INCH (THOUSANDTH INCH)
MLLW MEAN LOWER LOW WATER
MIN MINIMUM
NAD NORTH AMERICAN DATUM
OC ON CENTER
PE POLYETHYLENE
PVC POLYVINYL CHLORIDE
TYP. TYPICAL
V VERTICAL



| REVISIONS | | | | |
|-----------|------|----|-------|-------------|
| REV | DATE | BY | APP'D | DESCRIPTION |
| | | | | |
| | | | | |
| | | | | |
| | | | | |
| | | | | |
| | | | | |
| | | | | |

DESIGNED BY: D. SHISHINO
DRAWN BY: R. RAZONABLE
CHECKED BY: C. MANSOUR
APPROVED BY: F. MASSABKI
SCALE: AS NOTED
DATE: MAY 29, 2025

**RIVERVIEW PARK
FISHING PIER REPAIRS**

GENERAL NOTES

G01

SHEET # 2 OF 6

ISSUED FOR BID

ONE INCH
 AT FULL SIZE, IF NOT ONE
 INCH SCALE ACCORDINGLY
 PLAN INTENDED TO BE VIEWED
 IN COLOR, ADJACENT BLOCK IS
 "BLUE"

K:\Projects\0906-City of Pittsburg\Fishing Pier Repair\Construction Plans\0906 PL-C02 SITE PLAN_C01.dwg 3 C01
 May 29, 2025 10:54am razonable



- NOTES:
1. HORIZONTAL DATUM: CALIFORNIA STATE PLANE, ZONE 3, NAD 83, U.S. FEET.
 2. IN WATER VERTICAL DATUM: MEAN LOWER LOW WATER (MLLW).

SOURCE:
 AERIAL ©2022 MICROSOFT CORPORATION ©2022 MAXAR
 ©CNES (2022) DISTRIBUTION AIRBUS DS

LEGEND:

- LIMITS OF WORK
- AREA OF REPAIRS
- ↔ ACCESS
- △ C C03 INDICATES DIRECTION OF CUTTING PLANE
SECTION "A" IS SHOWN ON DRAWING "C03"
- △ C C03 INDICATES DIRECTION OF VIEW PLANE
SECTION "A" IS SHOWN ON DRAWING "C03"
- 1 C03 DETAIL "1" IS SHOWN ON DRAWING "C03"

↑ NORTH
 0 30 60
 SCALE IN FEET

ISSUED FOR BID

PLAN INTENDED TO BE VIEWED IN COLOR. ADJACENT BLOCK IS "BLUE" INCH SCALE ACCORDINGLY



| REVISIONS | | | | | |
|-----------|------|----|-------|-------------|--|
| REV | DATE | BY | APP'D | DESCRIPTION | |
| | | | | | |
| | | | | | |
| | | | | | |
| | | | | | |

DESIGNED BY: D. SHISHINO
 DRAWN BY: R. RAZONABLE
 CHECKED BY: C. MANSOUR
 APPROVED BY: F. MASSABKI
 SCALE: AS NOTED
 DATE: MAY 29, 2025

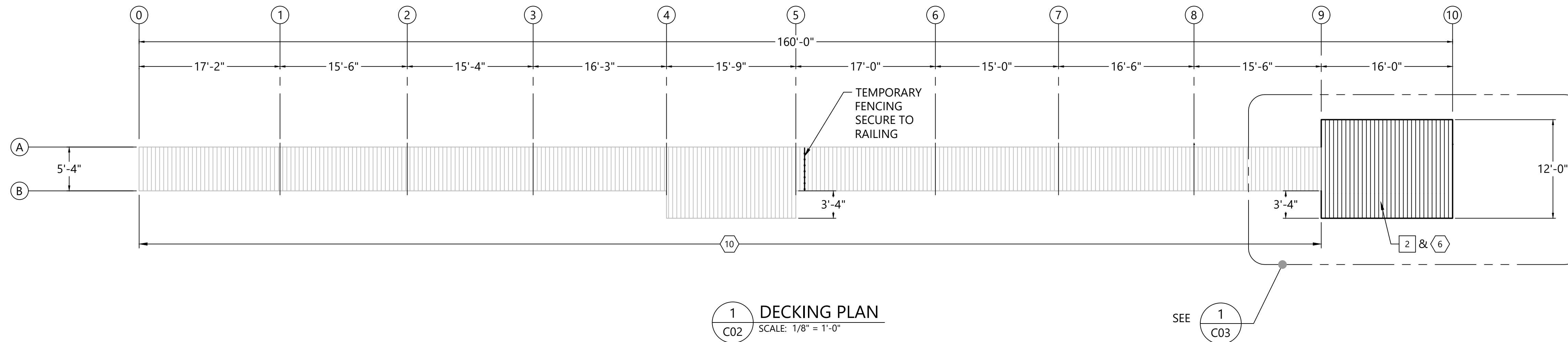
RIVERVIEW PARK FISHING PIER REPAIRS

SITE PLAN AND ACCESS

C01

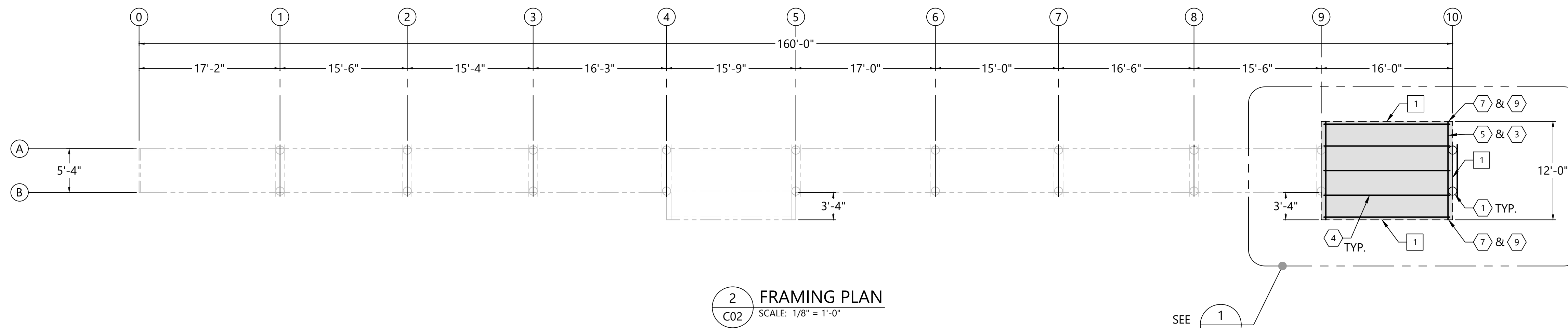
SHEET # **3** OF **6**

K:\Projects\0906-City of Pittsburg\Fishing Pier Repair\Construction Plans\0906 PL-C03 DECKING AND FRAMING PLAN_C03.dwg 4.C02



1
C02
DECKING PLAN
SCALE: 1/8" = 1'-0"

SEE **1**
C03



2
C02
FRAMING PLAN
SCALE: 1/8" = 1'-0"

SEE **1**
C03

NOTE:
DIMENSIONS SHOWN ARE NOMINAL.
FIELD VERIFY ALL DIMENSIONS.

DEMOLITION NOTES:

- 1** REMOVE TOP & BOT. RAIL BETWEEN BENTS 9 AND 10, ONLY.
- 2** REMOVE DECK BETWEEN BENTS 9 & 10, ONLY.
- 3** REMOVE 8x8 END POST ABOVE PILE B-10.
- 4** REMOVE CENTRAL 4x14 STRINGERS AND SPLICE CONNECTORS.
- 5** REMOVE 3x10 LEDGER
- 6** REMOVE 2x8 CROSS BRACES

CONSTRUCTION NOTES:

- 1** CONSTRUCT PILE WRAP PER SHEET C04, TYPICAL ALL PILES BENT 10, ONLY.
- 2** CONSTRUCT NEW FRP BRACING, TYPICAL BENT 10, ONLY.
- 3** CONSTRUCT NEW 3x10 LEDGER.
- 4** CONSTRUCT NEW 4x14 STRINGERS AND SPLICE CONNECTORS.
- 5** CONSTRUCT NEW 8x8 END POST ABOVE PILE A-10.
- 6** CONSTRUCT NEW FULL WIDTH 2x6 DECKING BETWEEN BENTS 9 AND 10, ONLY.
- 7** CONSTRUCT NEW 4x6 BOT. RAIL, TYPICAL BETWEEN BENTS 9 AND 10, ONLY.
- 8** CONSTRUCT NEW PRESSURE TREATED WOOD HANDRAIL TO MATCH EXISTING.
- 9** CONSTRUCT NEW. 2x6 TOP RAIL, TYPICAL BETWEEN BENTS 9 AND 10, ONLY
- 10** EXISTING DECKING TO REMAIN, PROTECT IN PLACE

ISSUED FOR BID

PLAN INTENDED TO BE VIEWED IN COLOR. ADJACENT BLOCK IS "BLUE" INCH SCALE ACCORDINGLY



| REVISIONS | | | | |
|-----------|------|----|-------|-------------|
| REV | DATE | BY | APP'D | DESCRIPTION |
| | | | | |
| | | | | |
| | | | | |
| | | | | |

DESIGNED BY: D. SHISHINO
 DRAWN BY: R. RAZONABLE
 CHECKED BY: C. MANSOUR
 APPROVED BY: F. MASSABKI
 SCALE: AS NOTED
 DATE: MAY 29, 2025

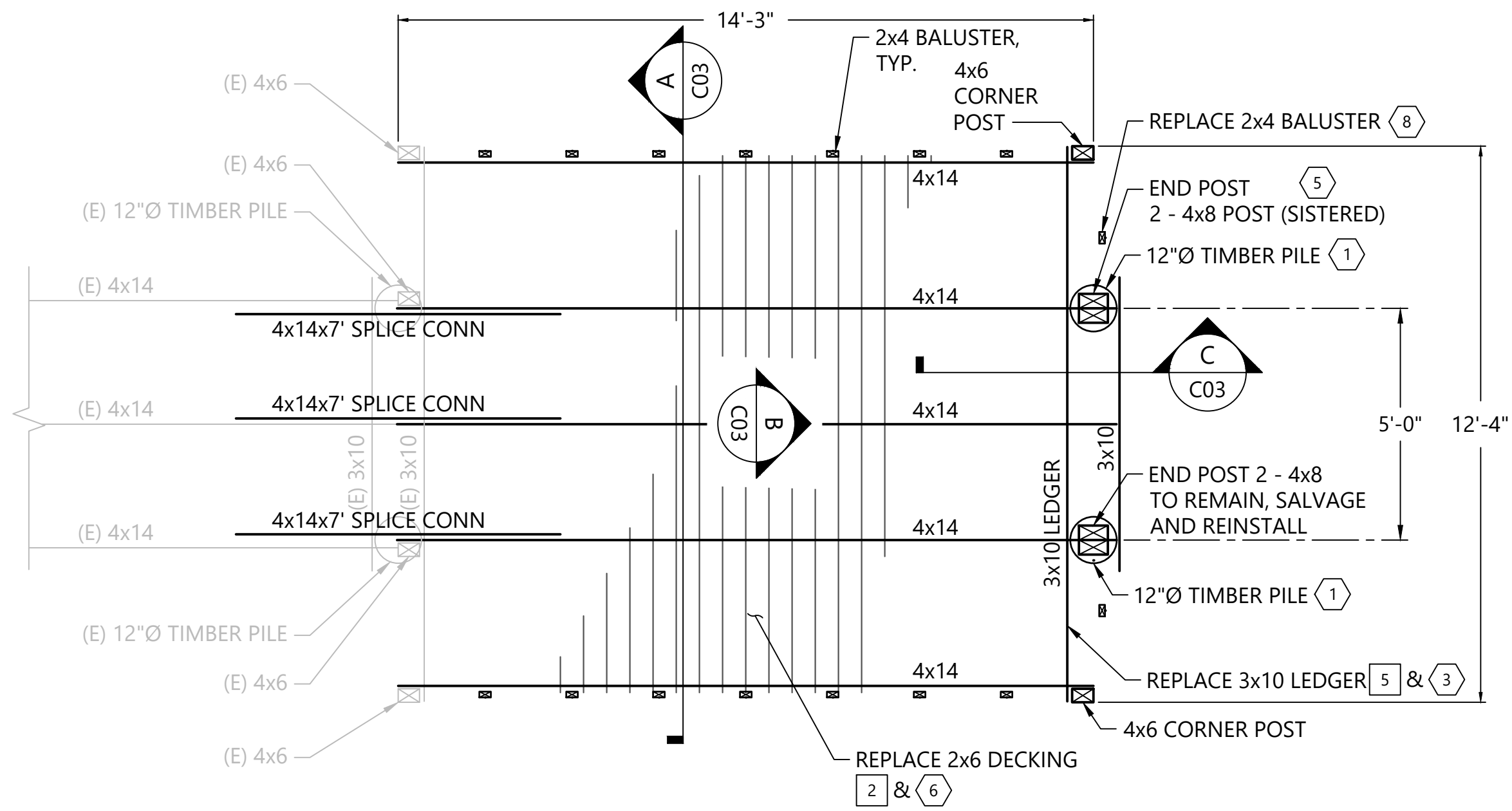
**RIVERVIEW PARK
FISHING PIER REPAIRS**

DECKING AND FRAMING PLANS

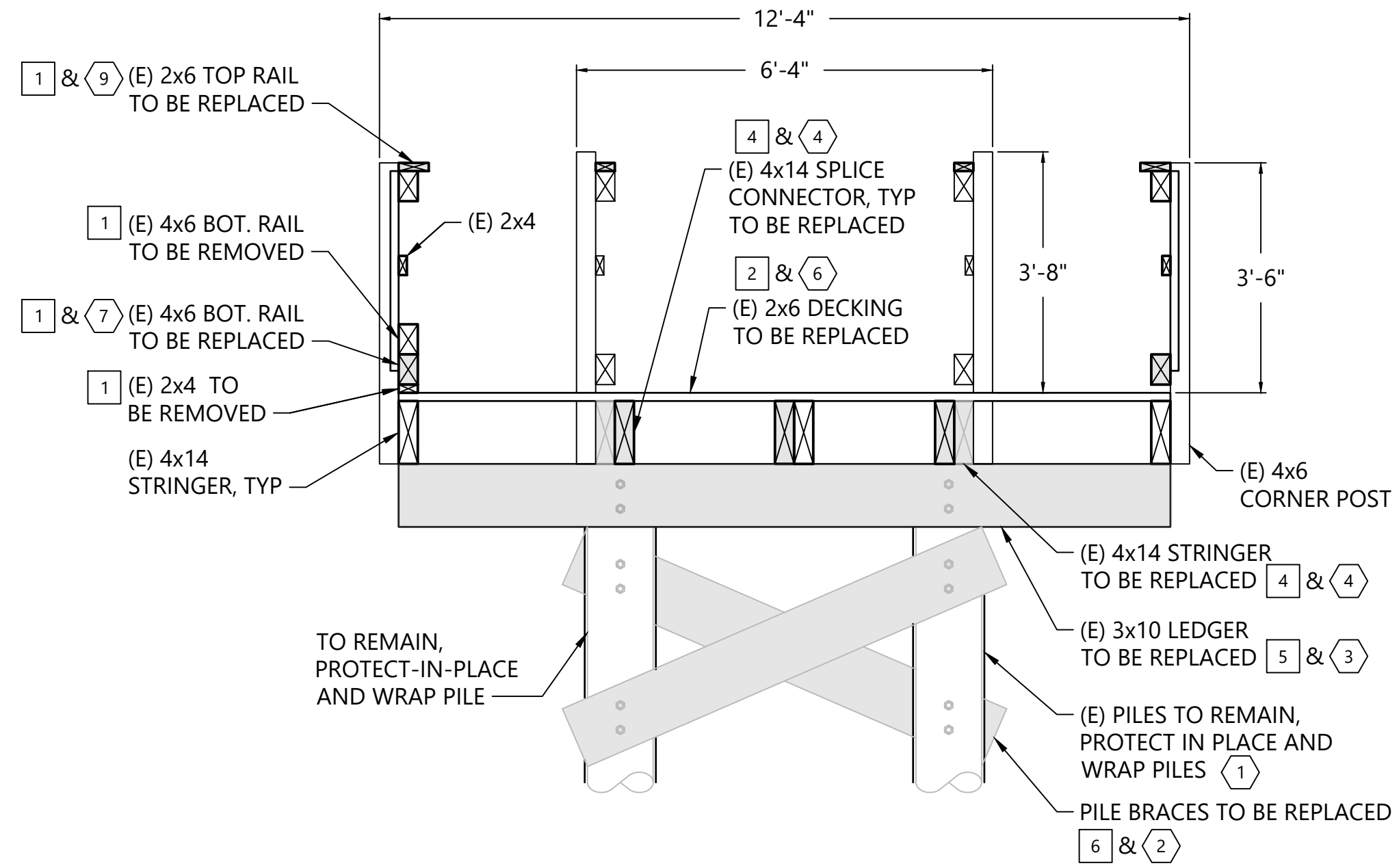
C02

SHEET # **4** OF **6**

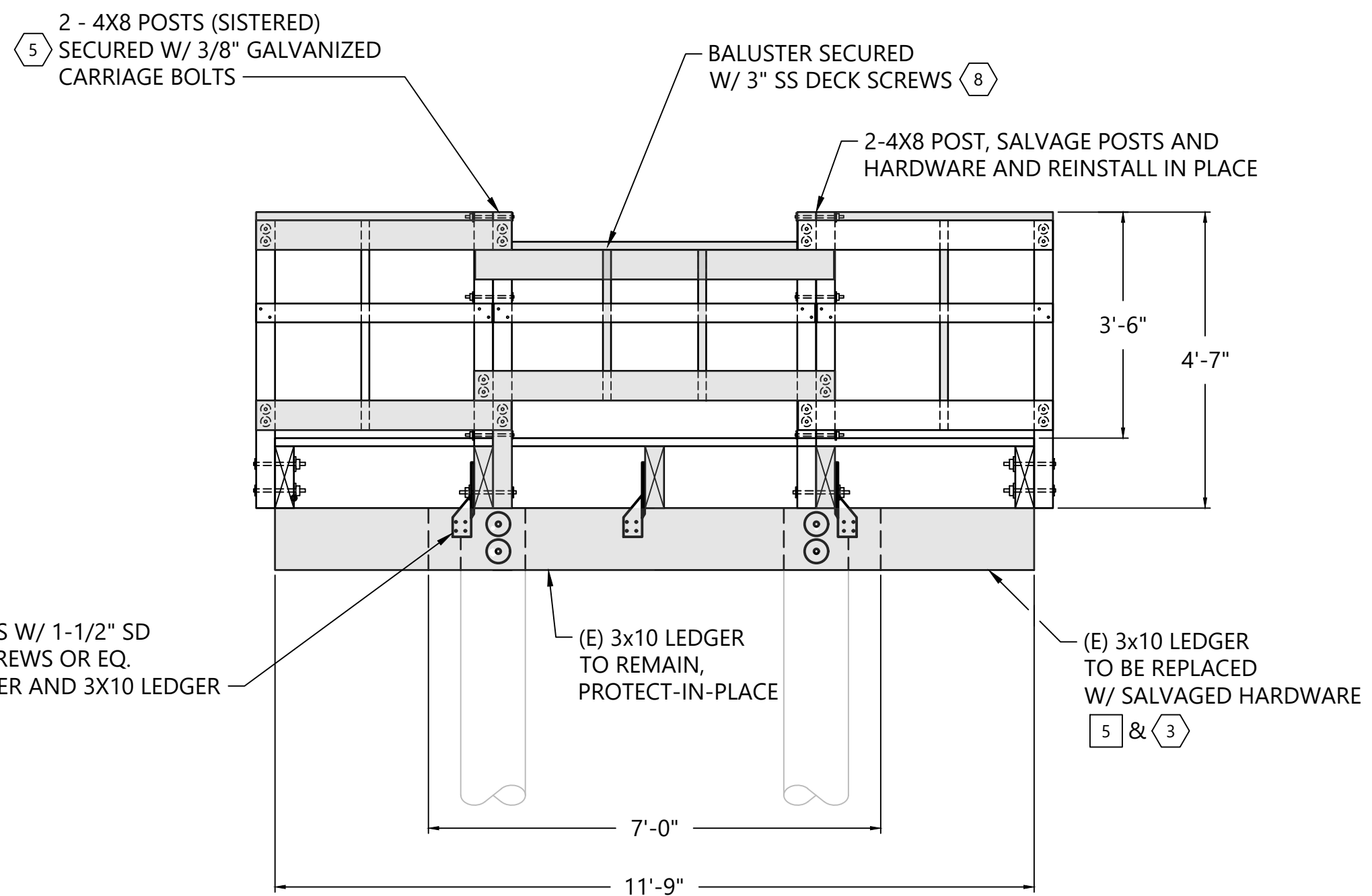
K:\Projects\0906-City of Pittsburg\Fishing Pier Repair\Construction Plans\0906 PL-C03 DECKING AND FRAMING PLAN_C03.dwg 5_C03



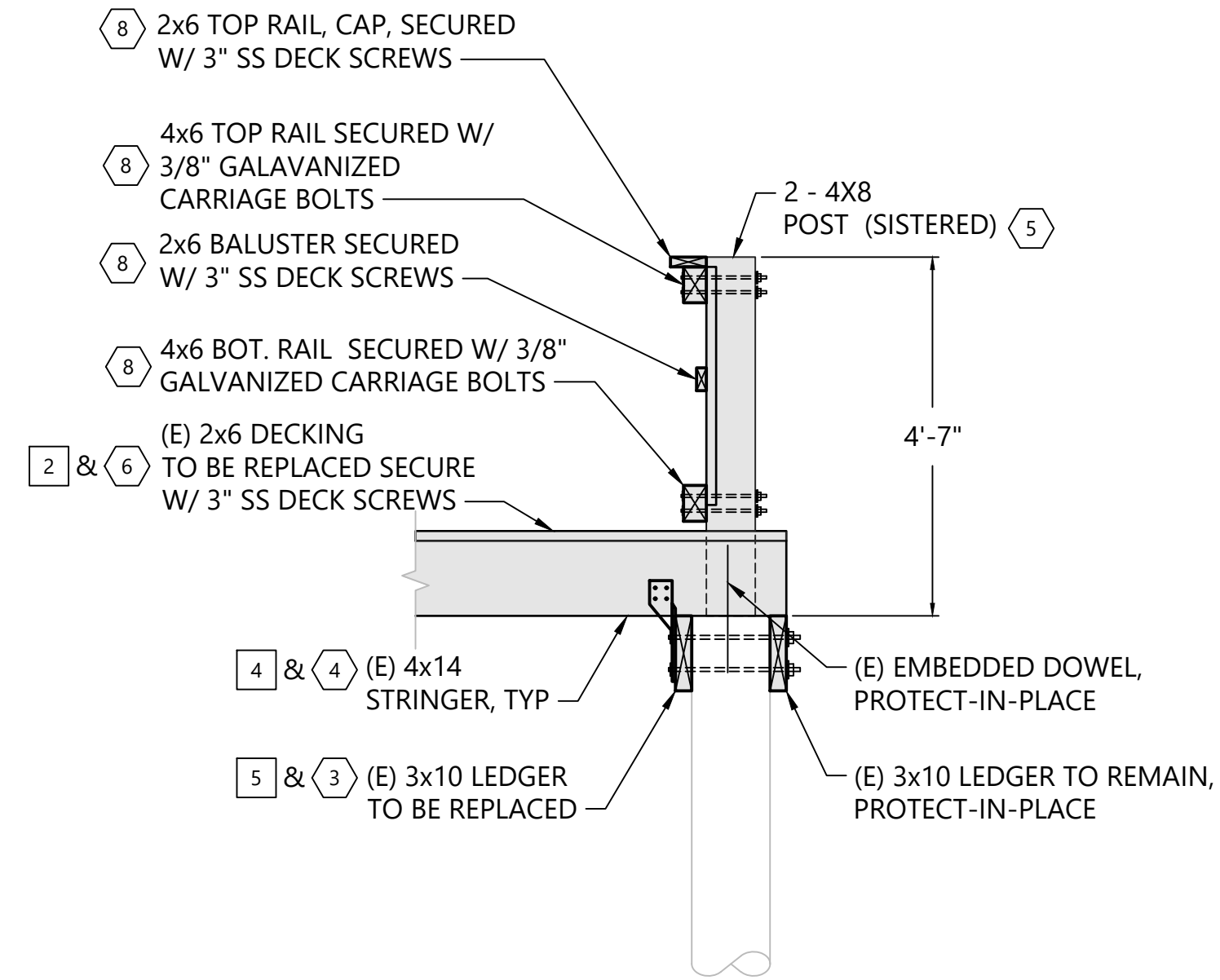
1 ENLARGED DECK FRAMING PLAN
SCALE: 3/8" = 1'-0"



A SECTION
SCALE: 1/2" = 1'-0"



B ELEVATION
SCALE: 1/2" = 1'-0"



C SECTION
SCALE: 1/2" = 1'-0"

DEMOLITION NOTES:

- 1 REMOVE TOP & BOT. RAIL BETWEEN BENTS 9 AND 10, ONLY.
- 2 REMOVE DECK BETWEEN BENTS 9 & 10, ONLY.
- 3 REMOVE 8x8 END POST ABOVE PILE B-10.
- 4 REMOVE CENTRAL 4x14 STRINGERS AND SPLICE CONNECTORS.
- 5 REMOVE 3x10 LEDGER
- 6 REMOVE 2x8 CROSS BRACES

CONSTRUCTION NOTES:

- 1 CONSTRUCT PILE WRAP PER SHEET C04, TYPICAL ALL PILES BENT 10, ONLY.
- 2 CONSTRUCT NEW FRP BRACING, TYPICAL BENT 10, ONLY.
- 3 CONSTRUCT NEW 3x10 LEDGER.
- 4 CONSTRUCT NEW 4x14 STRINGERS AND SPLICE CONNECTORS.
- 5 CONSTRUCT NEW 2 - 4x8 END POST ABOVE PILE A-10.
- 6 CONSTRUCT NEW FULL WIDTH 2x6 DECKING BETWEEN BENTS 9 AND 10, ONLY.
- 7 CONSTRUCT NEW 4x6 BOT. RAIL, TYPICAL BETWEEN BENTS 9 AND 10, ONLY.
- 8 CONSTRUCT NEW PRESSURE TREATED WOOD HANDRAIL TO MATCH EXISTING.
- 9 CONSTRUCT NEW 2x6 TOP RAIL, TYPICAL BETWEEN BENTS 9 AND 10, ONLY

ISSUED FOR BID



| REVISIONS | | | | |
|-----------|------|----|-------|-------------|
| REV | DATE | BY | APP'D | DESCRIPTION |
| | | | | |
| | | | | |
| | | | | |
| | | | | |

DESIGNED BY: D. SHISHINO
 DRAWN BY: R. RAZONABLE
 CHECKED BY: C. MANSOUR
 APPROVED BY: F. MASSABKI
 SCALE: AS NOTED
 DATE: MAY 29, 2025

**RIVERVIEW PARK
FISHING PIER REPAIRS**

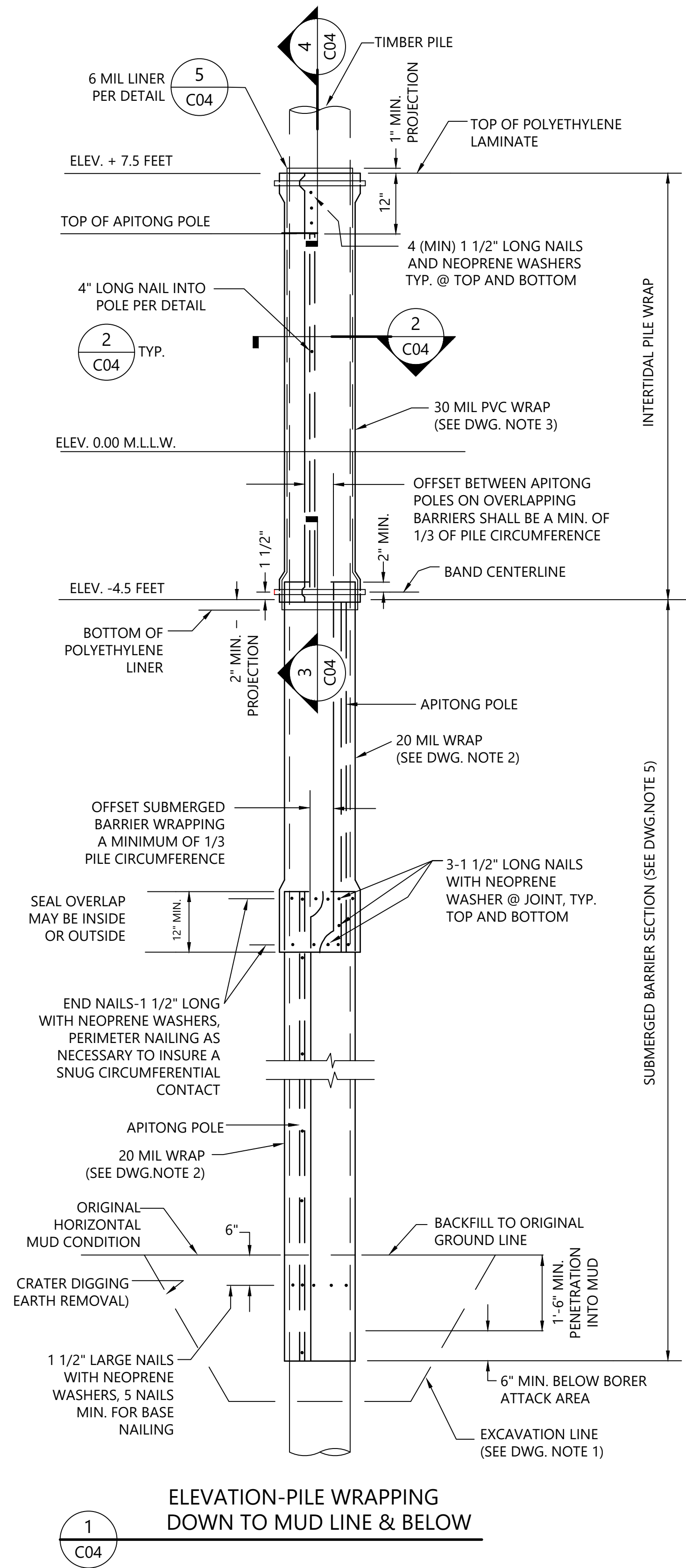
SECTIONS AND DETAILS

C03

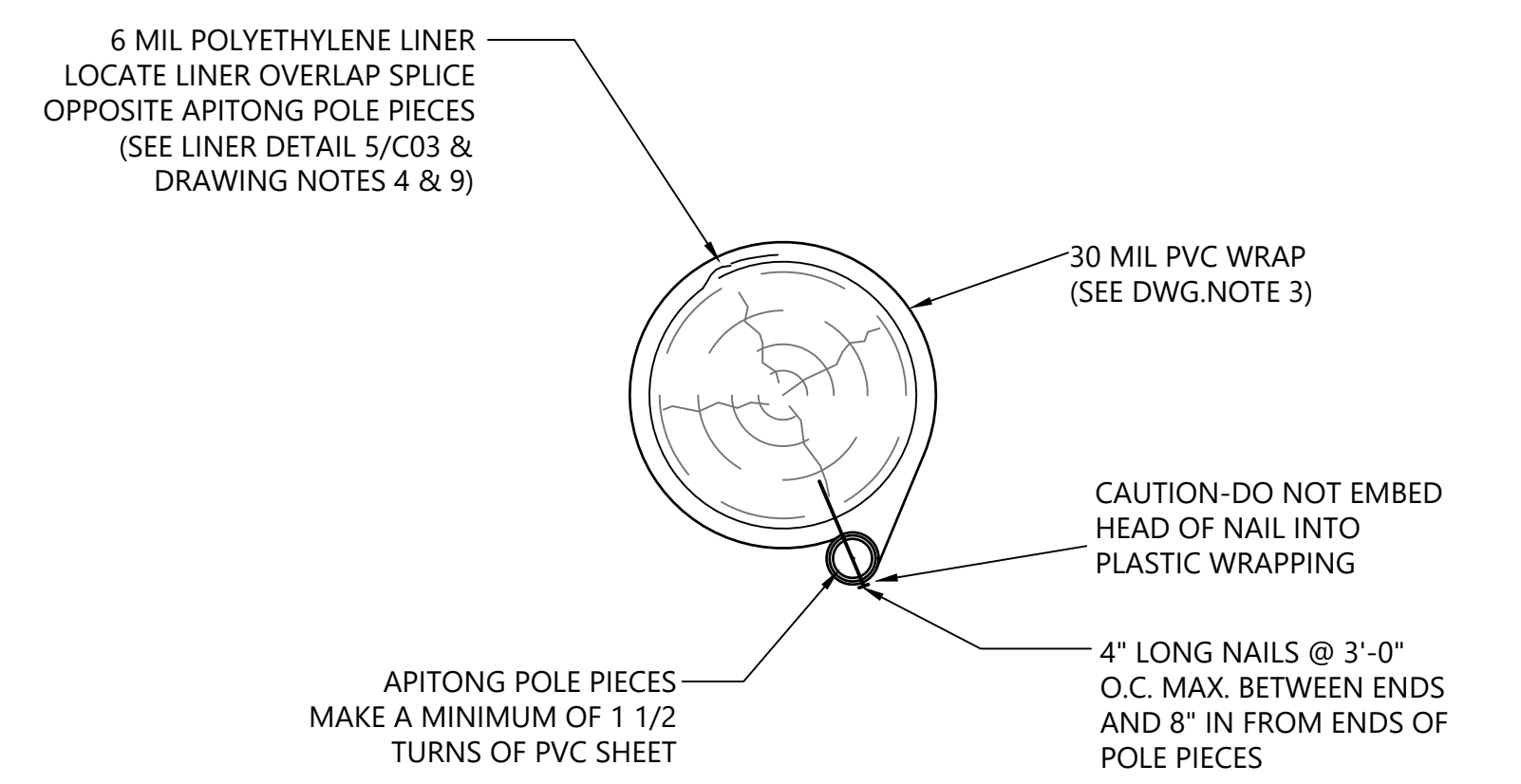
SHEET # **5** OF **6**

PLAN INTENDED TO BE VIEWED IN COLOR. ADJACENT BLOCK IS "BLUE" INCH SCALE ACCORDINGLY

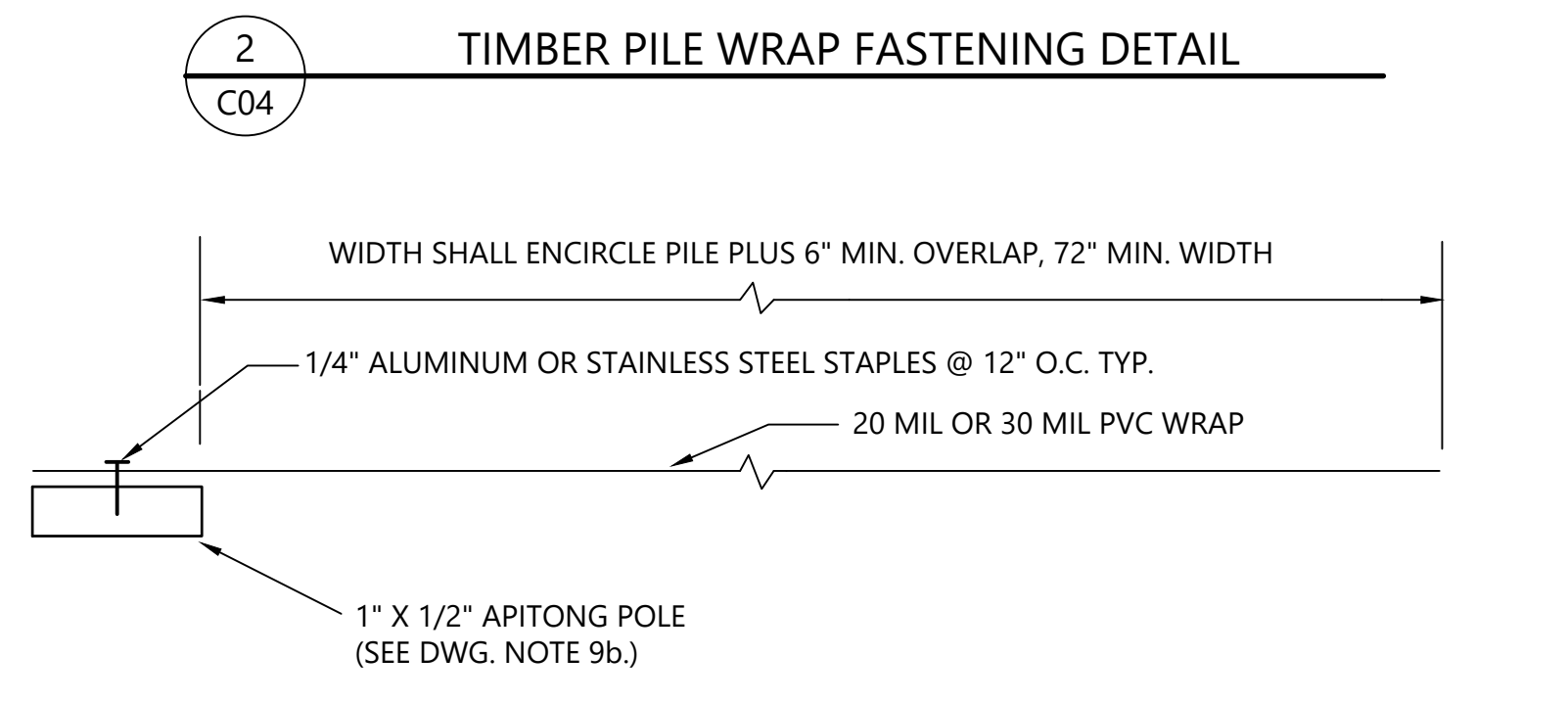
K:\Projects\0906-City of Pittsburg\Fishing Pier Repair\Construction Plans\0906-PL-C04-DETAILS-C04.dwg 6 C04
May 29, 2025 10:54am rasonable



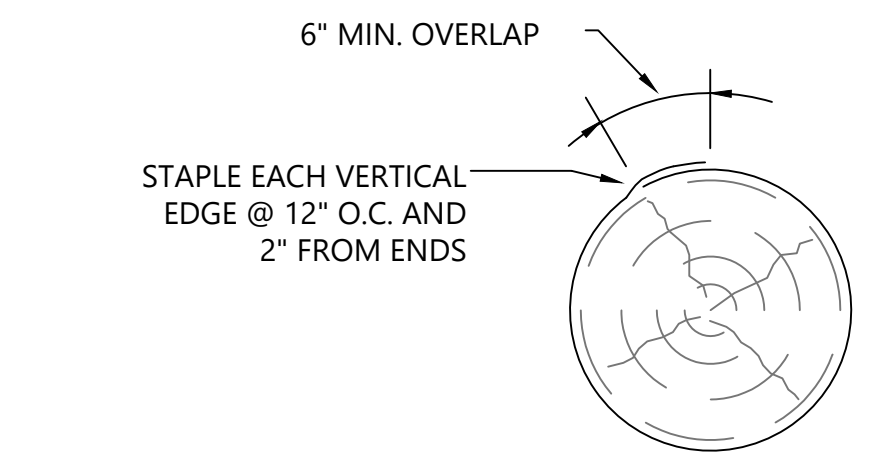
1
C04
ELEVATION-PILE WRAPPING
DOWN TO MUD LINE & BELOW



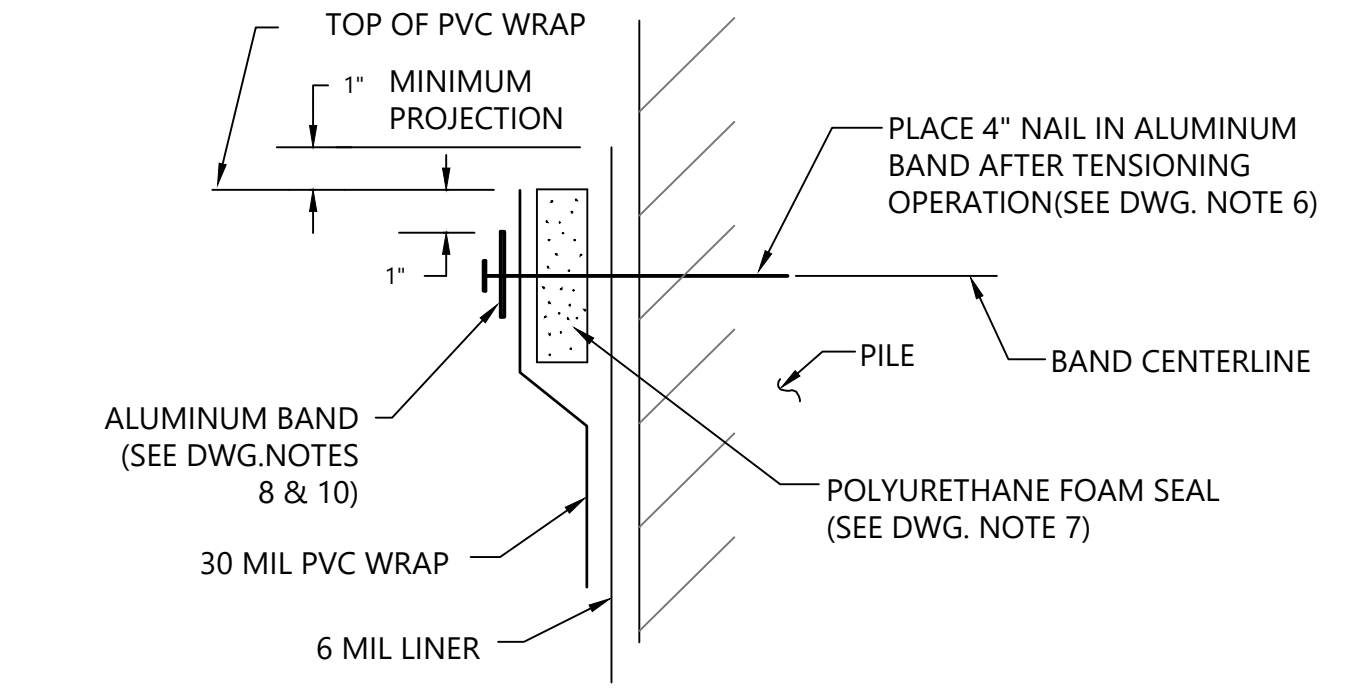
2
C04
TIMBER PILE WRAP FASTENING DETAIL



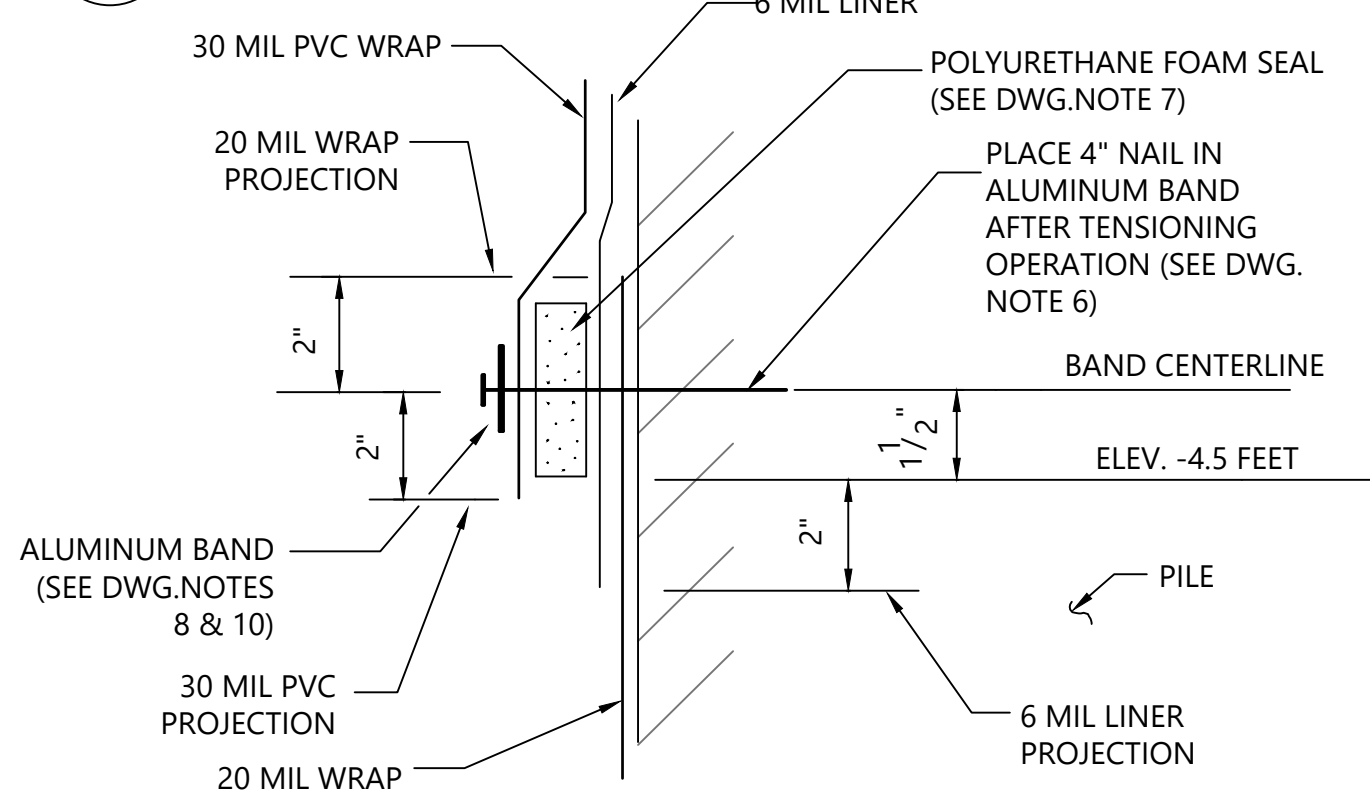
6
C04
PVC WRAP ASSEMBLY



5
C04
6 MIL POLYETHYLENE LINER INSTALLATION
(SEE DWG. NOTE 10)



4
C04
UPPER SEAL INTERTIDAL WRAPPING



3
C04
LOWER SEAL INTERTIDAL WRAPPING

DRAWING NOTES

1. MUD SEAL NOTES:
 - a. CRATER DIGGING SHOULD BE COMPLETED MANUALLY.
 - b. AFTER WRAPPING, BACKFILL CRATER WITH MUD TO ORIGINAL ELEVATION.
 - c. REMOVE ANY ROCK PRIOR TO PILE WRAPPING.
2. 20 MIL POLYETHYLENE PLASTIC BARRIER WRAPPING WITHOUT 6 MIL POLYETHYLENE LINER. (REFER TO POLA REFERENCE DRAWING NO.2-1915).
3. 30 MIL PVC PLASTIC BARRIER WRAPPING WITH 6 MIL POLYETHYLENE LINER (REFER TO POLA REFERENCE DRAWING NO. 2-1915).
4. 6 MIL POLYETHYLENE LINER (ROLL STOCK) 0.006\"/>

GENERAL NOTES

1. PLASTIC BARRIER WRAP SHALL BE AS NOTED IN "ELEVATION-PILE WRAPPING, DOWN TO MUD LINE AND BELOW".
2. PILES TO BE WRAPPED WILL BE INDICATED ON CONTRACT DRAWINGS OR IN THE SPECIFICATIONS.
3. PILE PREPARATION PRIOR TO WRAPPING-REFER TO SPECIFICATIONS.
4. FOR WRAPPINGS TO PILES, A 150 MIL WRAPPING SHALL BE INSTALLED OVER THE STANDARD WRAPPINGS IN THE INTERTIDAL ZONE ONLY.
5. ALL PLASTIC BARRIER ASSEMBLIES SHALL BE FURNISHED BY THE CONTRACTOR AND SHALL INCLUDE AS A MINIMUM:
 - a. FLEXIBLE PLASTIC SHEETS WITH ATTACHED POLES
 - b. BANDS AND FOAM SEALS FOR INTERTIDAL WRAPS,
 - c. PLASTIC POLE CLAMPS,
 - d. ALUMINUM NAILS 1 1/2\"/>
6. APITONG POLES CAN BE APITONG WOOD OR, COMPOSITE, OR OTHER UNTREATED BORER-RESISTANT POLE.

PLAN INTENDED TO BE VIEWED IN COLOR. ADJACENT BLOCK IS "BLUE" ONE INCH AT FULL SIZE. IF NOT ONE INCH SCALE ACCORDINGLY

ISSUED FOR BID



| REVISIONS | | | | |
|-----------|------|----|-------|-------------|
| REV | DATE | BY | APP'D | DESCRIPTION |
| | | | | |
| | | | | |
| | | | | |
| | | | | |

DESIGNED BY: D. SHISHINO
 DRAWN BY: R. RAZONABLE
 CHECKED BY: C. MANSOUR
 APPROVED BY: F. MASSABKI
 SCALE: AS NOTED
 DATE: MAY 29, 2025

**RIVERVIEW PARK
FISHING PIER REPAIRS**

DETAILS

C04

SHEET # **6** OF **6**